

- LEGEND**
- Indicates existing structures to be demolished/removed.
  - Indicates area of site. 8024sq.m. total.
  - Indicates existing trees to be retained.
  - Indicates existing trees to be removed.
  - Indicates existing easement for overland flow 1.83m wide.

A	Issued for Development Application	Jan. 2017
Issue	Amendment Description	Date
AMENDMENTS		

- Figured dimensions to be taken in preference to scaling.
- Builder to check all dimensions on site where relevant and notify of any discrepancies.
- All dimensions are given in millimetres except levels and drawings to scale 1:500 and smaller which are in metres.

CLIENT

 **St Vincent de Paul Society**  
*good works*

 **Armelle Housing**  
*Building New Through Housing*

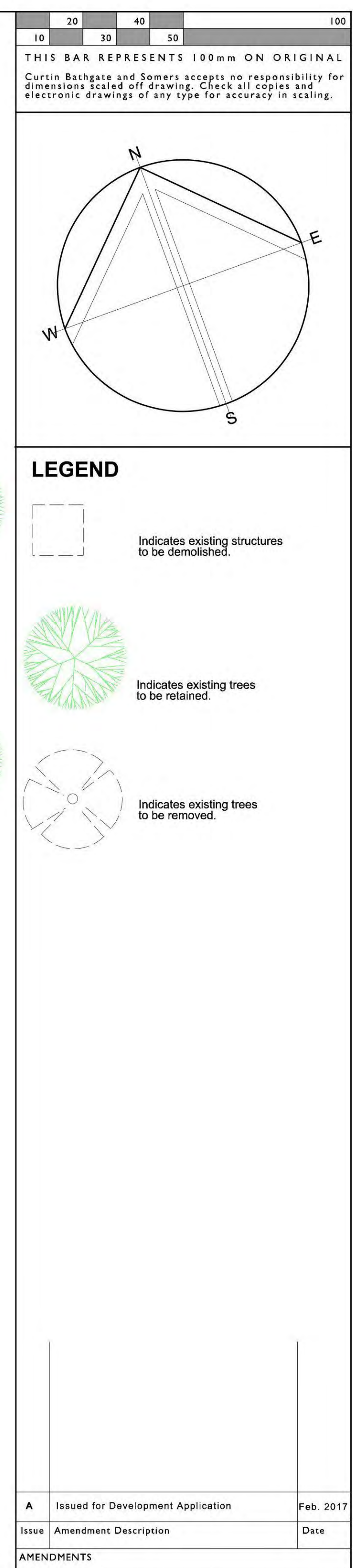
 **CURTIN ARCHITECTS**  
PTY. LIMITED ABN 43 052 102 744  
Level 2, 52 Atchison Street ST LEONARDS NSW 2065  
mail@curtinarchitects.com.au Phone: (02) 9437 1111




PROJECT:  
**AFFORDABLE HOUSING DEVELOPMENT  
OLIVE STREET ALBURY**

DRAWING TITLE:  
**EXISTING SITE PLAN**

DRAWN BY: <b>GT</b>	SCALE: <b>1:200 @ B1</b>
PROJECT No: <b>6477</b>	DATE STARTED:
DRAWING No: <b>A90</b>	ISSUE: <b>A</b>





CLIENT  <b>St Vincent de Paul Society</b> <i>good works</i>	
 <b>Amelie Housing</b> <i>Building hope through housing</i>	
 <div style="display: flex; justify-content: space-between;"> <div> <b>CURTIN ARCHITECTS</b>  <b>PTY. LIMITED</b> </div> <div> <b>CURTIN ARCHITECTS</b>            PTY. LIMITED            2701, 2702, 2703, 2704, 2705, 2706, 2707, 2708, 2709, 2710, 2711, 2712, 2713, 2714, 2715, 2716, 2717, 2718, 2719, 2720, 2721, 2722, 2723, 2724, 2725, 2726, 2727, 2728, 2729, 2730, 2731, 2732, 2733, 2734, 2735, 2736, 2737, 2738, 2739, 2740, 2741, 2742, 2743, 2744, 2745, 2746, 2747, 2748, 2749, 2750, 2751, 2752, 2753, 2754, 2755, 2756, 2757, 2758, 2759, 2760, 2761, 2762, 2763, 2764, 2765, 2766, 2767, 2768, 2769, 2770, 2771, 2772, 2773, 2774, 2775, 2776, 2777, 2778, 2779, 2780, 2781, 2782, 2783, 2784, 2785, 2786, 2787, 2788, 2789, 2790, 2791, 2792, 2793, 2794, 2795, 2796, 2797, 2798, 2799, 2800, 2801, 2802, 2803, 2804, 2805, 2806, 2807, 2808, 2809, 2810, 2811, 2812, 2813, 2814, 2815, 2816, 2817, 2818, 2819, 2820, 2821, 2822, 2823, 2824, 2825, 2826, 2827, 2828, 2829, 2830, 2831, 2832, 2833, 2834, 2835, 2836, 2837, 2838, 2839, 2840, 2841, 2842, 2843, 2844, 2845, 2846, 2847, 2848, 2849, 2850, 2851, 2852, 2853, 2854, 2855, 2856, 2857, 2858, 2859, 2860, 2861, 2862, 2863, 2864, 2865, 2866, 2867, 2868, 2869, 2870, 2871, 2872, 2873, 2874, 2875, 2876, 2877, 2878, 2879, 2880, 2881, 2882, 2883, 2884, 2885, 2886, 2887, 2888, 2889, 2890, 2891, 2892, 2893, 2894, 2895, 2896, 2897, 2898, 2899, 2900, 2901, 2902, 2903, 2904, 2905, 2906, 2907, 2908, 2909, 2910, 2911, 2912, 2913, 2914, 2915, 2916, 2917, 2918, 2919, 2920, 2921, 2922, 2923, 2924, 2925, 2926, 2927, 2928, 2929, 2930, 2931, 2932, 2933, 2934, 2935, 2936, 2937, 2938, 2939, 2940, 2941, 2942, 2943, 2944, 2945, 2946, 2947, 2948, 2949, 2950, 2951, 2952, 2953, 2954, 2955, 2956, 2957, 2958, 2959, 2960, 2961, 2962, 2963, 2964, 2965, 2966, 2967, 2968, 2969, 2970, 2971, 2972, 2973, 2974, 2975, 2976, 2977, 2978, 2979, 2980, 2981, 2982, 2983, 2984, 2985, 2986, 2987, 2988, 2989, 2990, 2991, 2992, 2993, 2994, 2995, 2996, 2997, 2998, 2999, 3000, 3001, 3002, 3003, 3004, 3005, 3006, 3007, 3008, 3009, 3010, 3011, 3012, 3013, 3014, 3015, 3016, 3017, 3018, 3019, 3020, 3021, 3022, 3023, 3024, 3025, 3026, 3027, 3028, 3029, 3030, 3031, 3032, 3033, 3034, 3035, 3036, 3037, 3038, 3039, 3040, 3041, 3042, 3043, 3044, 3045, 3046, 3047, 3048, 3049, 3050, 3051, 3052, 3053, 3054, 3055, 3056, 3057, 3058, 3059, 3060, 3061, 3062, 3063, 3064, 3065, 3066, 3067, 3068, 3069, 3070, 3071, 3072, 3073, 3074, 3075, 3076, 3077, 3078, 3079, 3080, 3081, 3082, 3083, 3084, 3085, 3086, 3087, 3088, 3089, 3090, 3091, 3092, 3093, 3094, 3095, 3096, 3097, 3098, 3099, 3100, 3101, 3102, 3103, 3104, 3105, 3106, 3107, 3108, 3109, 3110, 3111, 3112, 3113, 3114, 3115, 3116, 3117, 3118, 3119, 3120, 3121, 3122, 3123, 3124, 3125, 3126, 3127, 3128, 3129, 3130, 3131, 3132, 3133, 3134, 3135, 3136, 3137, 3138, 3139, 3140, 3141, 3142, 3143, 3144, 3145, 3146, 3147, 3148, 3149, 3150, 3151, 3152, 3153, 3154, 3155, 3156, 3157, 3158, 3159, 3160, 3161, 3162, 3163, 3164, 3165, 3166, 3167, 3168, 3169, 3170, 3171, 3172, 3173, 3174, 3175, 3176, 3177, 3178, 3179, 3180, 3181, 3182, 3183, 3184, 3185, 3186, 3187, 3188, 3189, 3190, 3191, 3192, 3193, 3194, 3195, 3196, 3197, 3198, 3199, 3200, 3201, 3202, 3203, 3204, 3205, 3206, 3207, 3208, 3209, 3210, 3211, 3212, 3213, 3214, 3215, 3216, 3217, 3218, 3219, 3220, 3221, 3222, 3223, 3224, 3225, 3226, 3227, 3228, 3229, 3230, 3231, 3232, 3233, 3234, 3235, 3236, 3237, 3238, 3239, 3240, 3241, 3242, 3243, 3244, 3245, 3246, 3247, 3248, 3249, 3250, 3251, 3252, 3253, 3254, 3255, 3256, 3257, 3258, 3259, 3260, 3261, 3262, 3263, 3264, 3265, 3266, 3267, 3268, 3269, 3270, 3271, 3272, 3273, 3274, 3275, 3276, 3277, 3278, 3279, 3280, 3281, 3282, 3283, 3284, 3285, 3286, 3287, 3288, 3289, 3290, 3291, 3292, 3293, 3294, 3295, 3296, 3297, 3298, 3299, 3300, 3301, 3302, 3303, 3304, 3305, 3306, 3307, 3308, 3309, 3310, 3311, 3312, 3313, 3314, 3315, 3316, 3317, 3318, 3319, 3320, 3321, 3322, 3323, 3324, 3325, 3326, 3327, 3328, 3329, 3330, 3331, 3332, 3333, 3334, 3335, 3336, 3337, 3338, 3339, </div></div>	



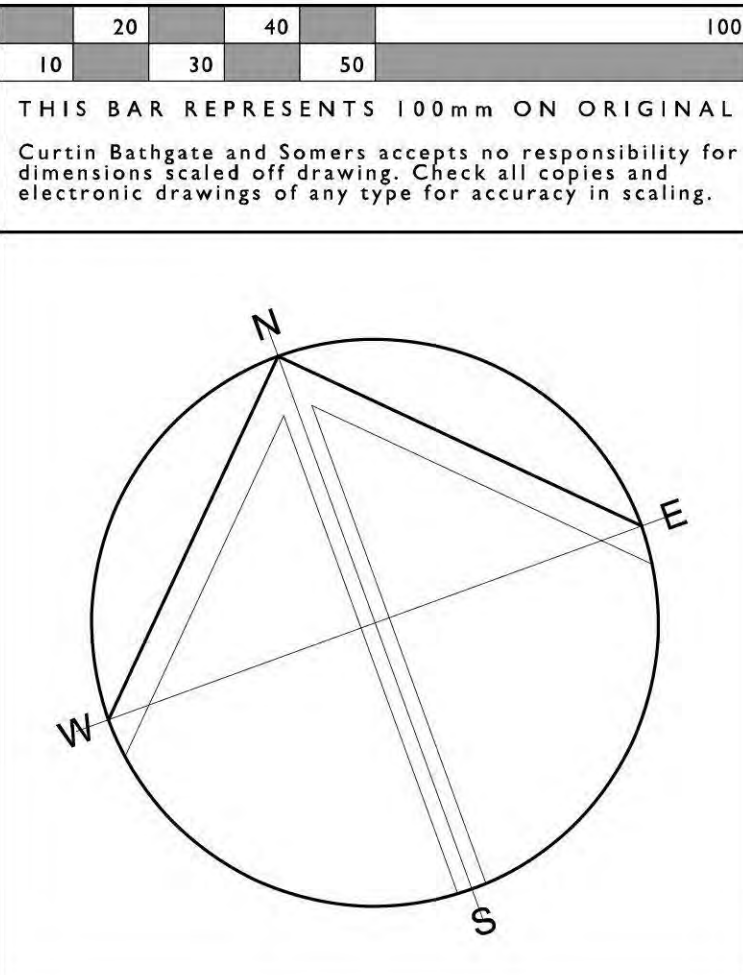
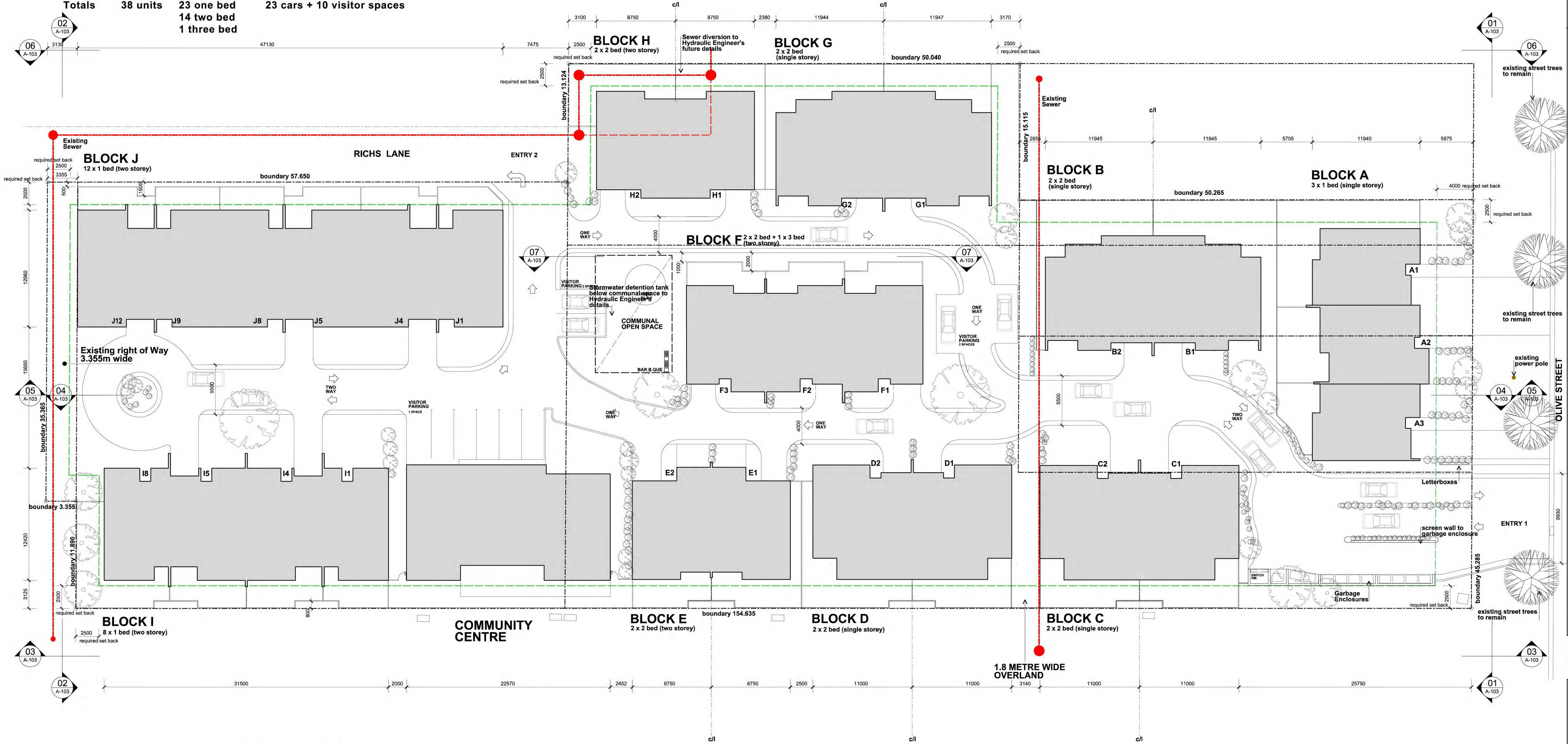
Summary of Accommodation

Building Block	Number of units in block	Make up of units	Number of cars accommodated in block
Block A	3	one bed units	3 cars
Block B	2	two bed units	2 cars
Block C	2	two bed units	2 cars
Block D	2	two bed units	2 cars
Block E	2	two bed units	2 cars
Block F	2	two bed units	2 cars
Block G	2	two bed units	2 cars
Block H	2	two bed units	2 cars
Block I	8	one bed units	2 cars
Block J	12	one bed units	3 cars

Unit A1 - 95m2	Unit A2 - 95m2	Unit A3 - 95m2
Unit B1 - 135m2	Unit B2 - 135m2	
Unit C1 - 130m2	Unit C2 - 130m2	
Unit D1 - 130m2	Unit D2 - 130m2	
Unit E1 - 162m2	Unit E2 - 162m2	
Unit F1 - 155m2	Unit F2 - 185m2	
Unit F3 - 155m2		
Unit G1 - 135m2	Unit G2 - 135m2	
Unit H1 - 95m2	Unit H2 - 95m2	
Unit I1 - 75m2	Unit I2 - 75m2	Unit I3 - 90m2
Unit J1 - 75m2	Unit J2 - 75m2	Unit J3 - 90m2
Unit J7 - 75m2	Unit J8 - 75m2	Unit J9 - 75m2
		Unit J10 - 75m2
		Unit J11 - 90m2
		Unit J12 - 100m2

Totals 38 units 23 one bed 14 two bed 1 three bed 23 cars + 10 visitor spaces

Site Area 8024 sq.m.



B	Revision to western boundary turning circle, right of way surfacing, Garbage area and deletion of entry arrow at Richs Lane.	Mar. 2017
A	Issued for Development Application	Jan. 2017
Issue	Amendment Description	Date
AMENDMENTS		

1. Figured dimensions to be taken in preference to scaling.
2. Builder to check all dimensions on site where relevant and notify of any discrepancies.
3. All dimensions are given in millimetres except levels and drawings to scale 1:500 and smaller which are in metres.



PROJECT: AFFORDABLE HOUSING DEVELOPMENT OLIVE STREET ALBURY

DRAWING TITLE: NOTIFICATION SITE PLAN (Ground Floor)

DRAWN BY: GT SCALE: 1:200 @ B1

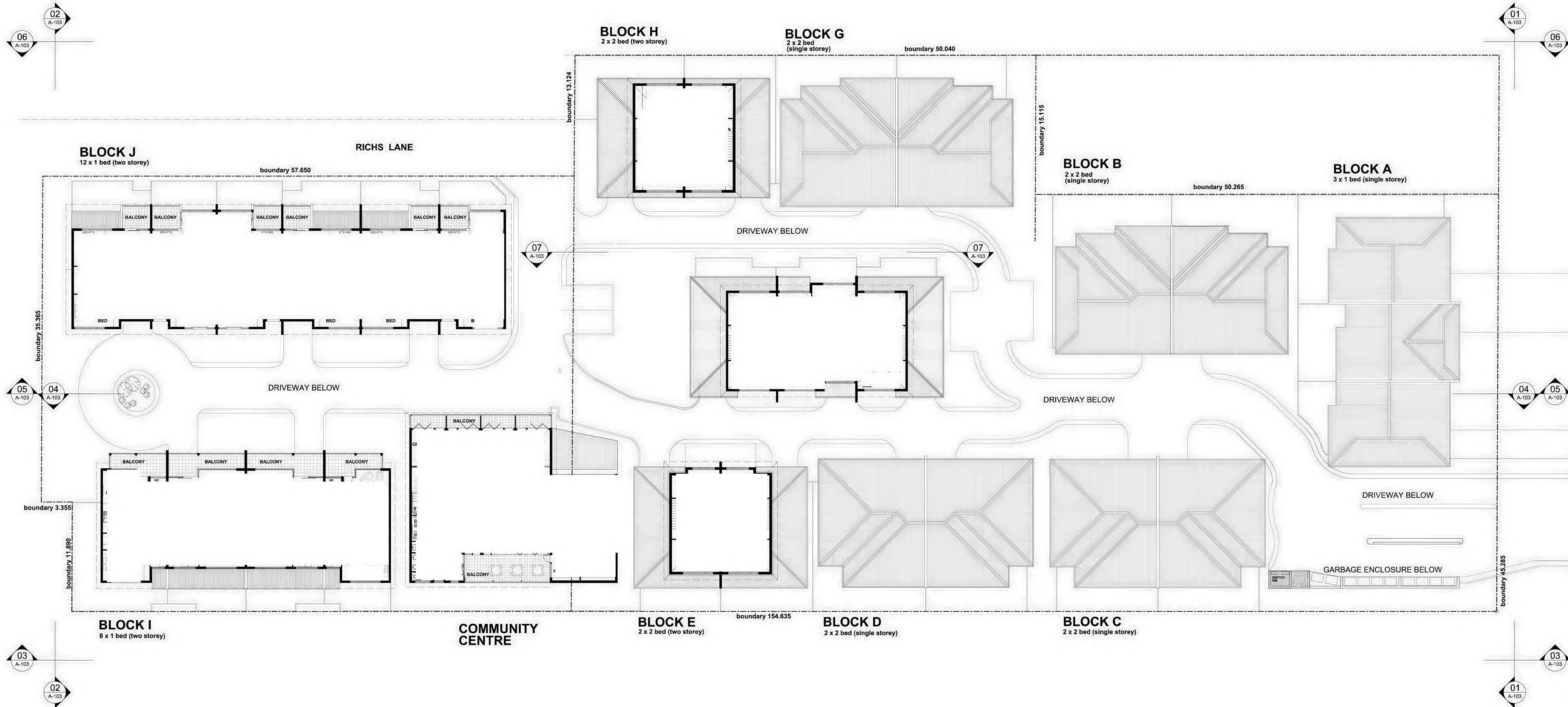
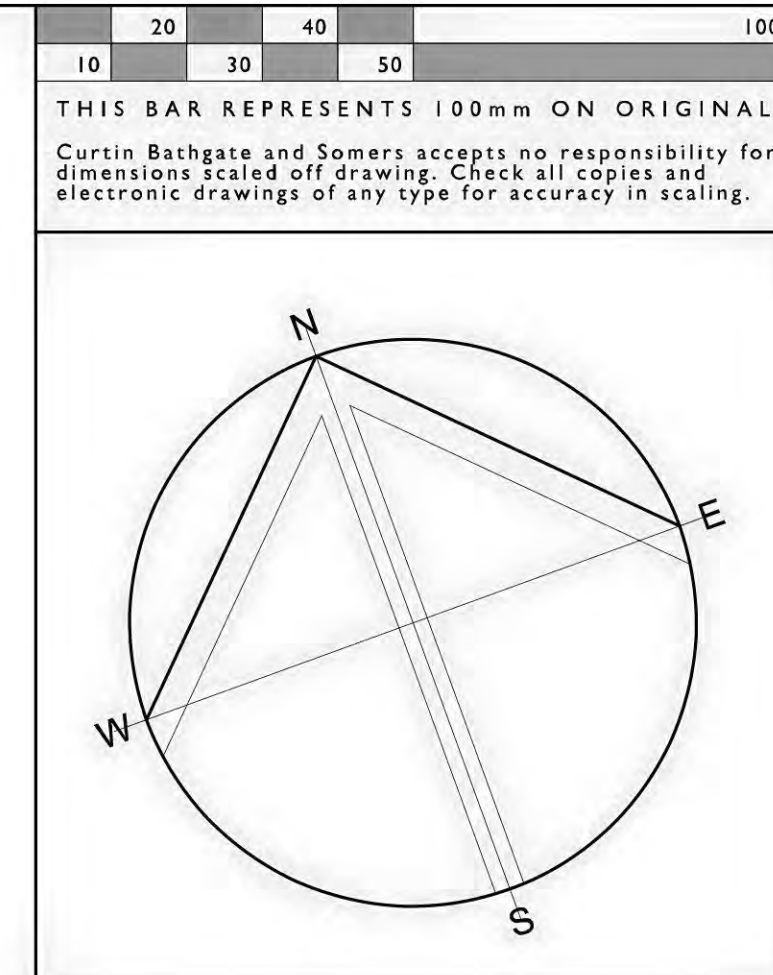
PROJECT No: 6477 DATE STARTED: DRAWING No: A900 ISSUE: B

FILE NAME: SETL\$



LOCATION PLAN NTS





OLIVE STREET

B	Amendments to driveway for Service Vehicle movement	Apr. 2017
A	Issued for Development Application	Jan. 2017
Issue	Amendment Description	Date
AMENDMENTS		

1. Figured dimensions to be taken in preference to scaling.
2. Builder to check all dimensions on site where relevant and notify of any discrepancies.
3. All dimensions are given in millimetres except levels and drawings to scale 1:500 and smaller which are in metres.



PROJECT:  
**AFFORDABLE HOUSING DEVELOPMENT  
OLIVE STREET ALBURY**

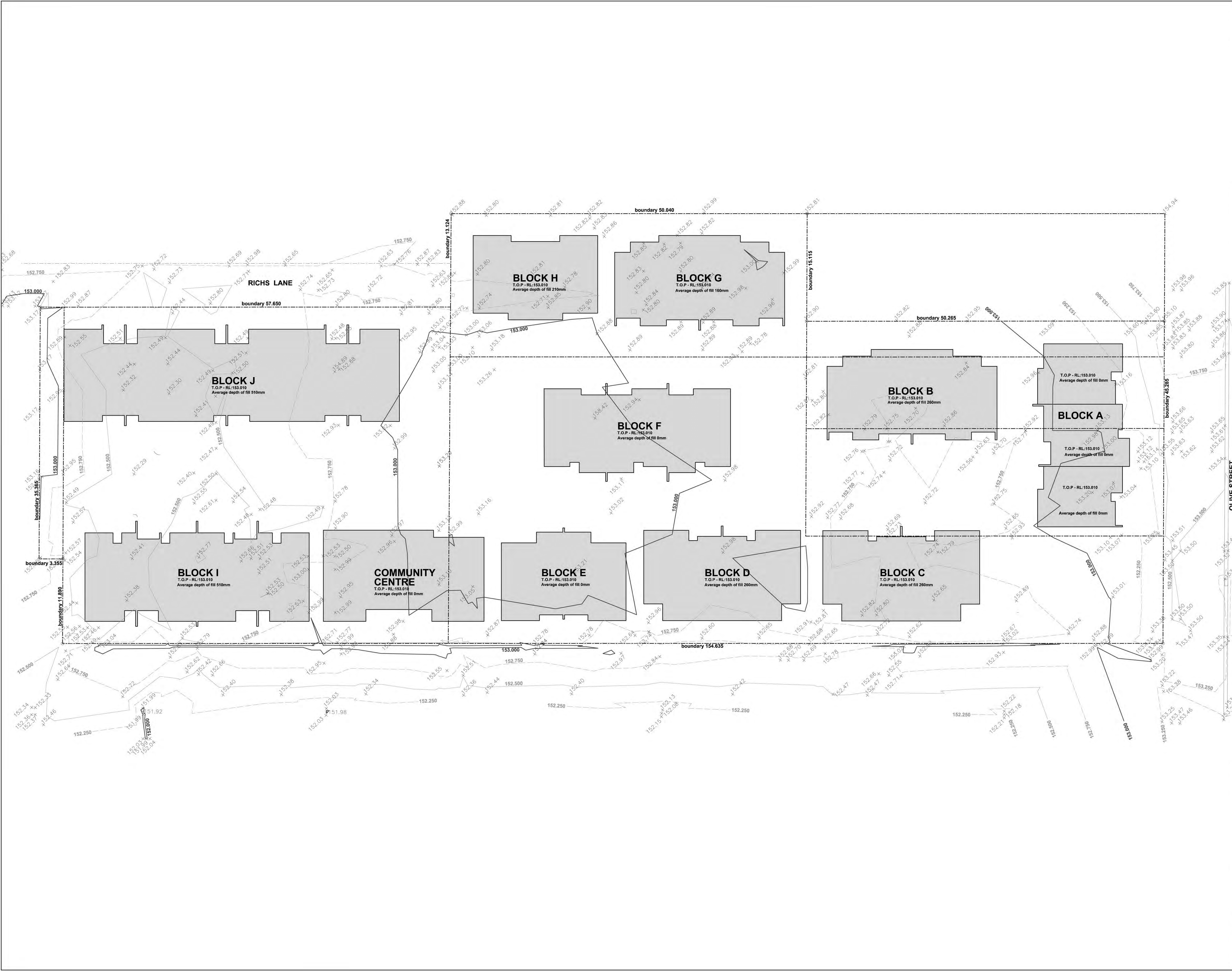
DRAWING TITLE:  
**SITE PLAN  
(First Floor Level)**

DRAWN BY:	GT	SCALE:	1:200 @ B1
PROJECT No:	6477	DATE STARTED:	
DRAWING No:	A101	ISSUE:	B









1020

20

30

40

50

100

THIS BAR REPRESENTS 100mm ON ORIGINAL

Curtin Bathgate and Somers accepts no responsibility for dimensions scaled off drawing. Check all copies and electronic drawings of any type for accuracy in scaling.

N

E

S

W

LEGEND

T.O.P Top Of Pad  
(Assumed 150mm thick slab  
& 50mm sand bed)

NOTE:

Finished Floor Level is required to be set at  
AHD RL 153.210 which is 500mm above the  
1:100 year flood level of AHD RL 152.710.

SUMMARY OF FILL

Block A0 cubic metres

Block B70 cubic metres

Block C67 cubic metres

Block D67 cubic metres

Block E0 cubic metres

Block F0 cubic metres

Block G43 cubic metres

Block H40 cubic metres

CC0 cubic metres

Block I185 cubic metres

Block J290 cubic metres

Total Fill for Building Pads762 cubic metres

A

Issued for Development Application

xxxxxx

Issue

Amendment Description

Date

AMENDMENTS

1. Figured dimensions to be taken in preference to scaling.

2. Builder to check all dimensions on site where relevant and notify of any discrepancies.

3. All dimensions are given in millimetres except levels and drawings to scale 1:500 and smaller which are in metres.

CLIENT

St Vincent de Paul Society

good works

Amélie Housing

Building Your Future Housing

CURTIN ARCHITECTS

PTY. LIMITED

ABN 43 052 102 744

Level 2, 52 Atchison Street ST LEONARDS NSW 2065

mail@curtinarchitects.com.au Phone: (02) 9437 1111

CURTIN ARCHITECTS

PROJECT:

AFFORDABLE HOUSING  
DEVELOPMENT  
OLIVE STREET ALBURY

DRAWING TITLE:

SITE CONTOUR  
& FILL PLAN

DRAWN BY:

GT / PDB

SCALE:

1:200 @ B1

PROJECT No:

6477

DATE STARTED:

DRAWING No:

A92

ISSUE:

A

FILE NAME:

T:\6477 St Vincent de Paul Albury\CAD\Drawing\Tissag2 Site Fill Plan.dwg

PLOT DATE:

12/04/2017

PLOT TIME:

2:54:00 PM



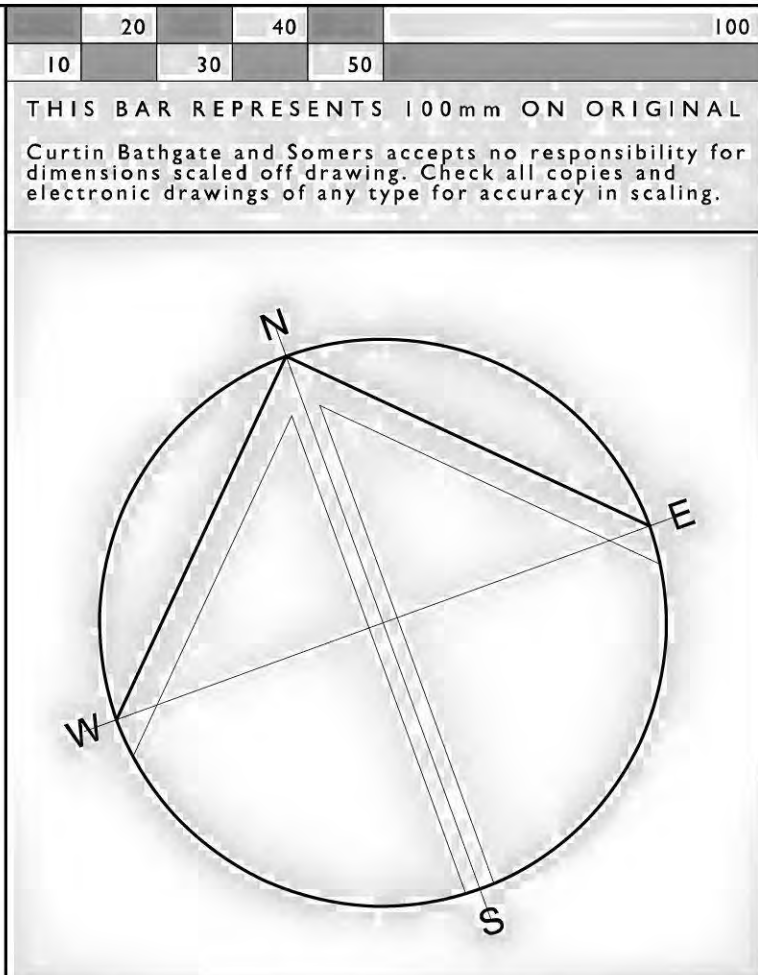
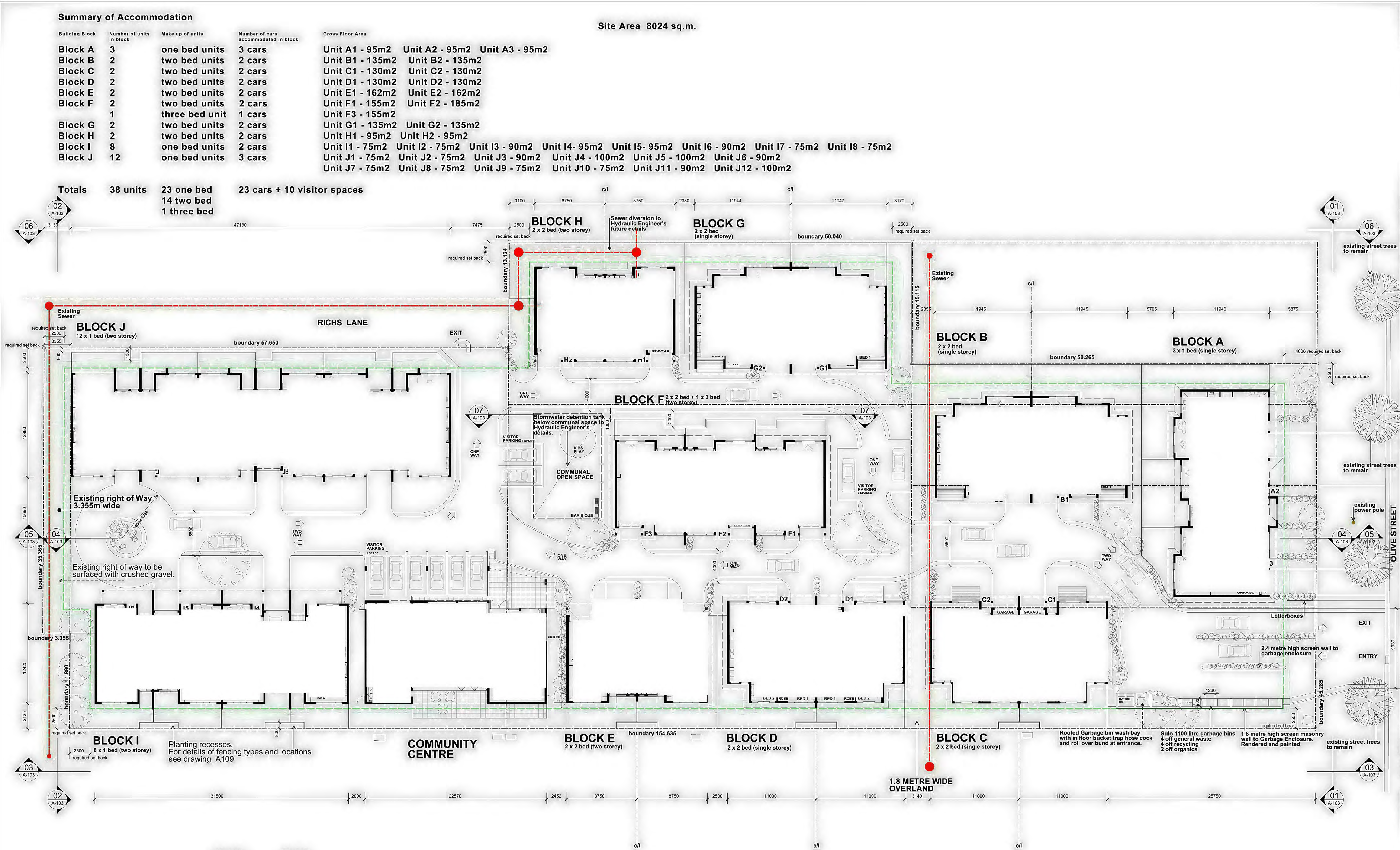
Summary of Accommodation

Building Block	Number of units in block	Make up of units	Number of cars accommodated in block
Block A	3	one bed units	3 cars
Block B	2	two bed units	2 cars
Block C	2	two bed units	2 cars
Block D	2	two bed units	2 cars
Block E	2	two bed units	2 cars
Block F	2	two bed units	2 cars
Block G	1	three bed unit	1 cars
Block H	2	two bed units	2 cars
Block I	2	two bed units	2 cars
Block J	8	one bed units	2 cars
Block K	12	one bed units	3 cars

Gross Floor Area	Unit A1 - 95m2	Unit A2 - 95m2	Unit A3 - 95m2
Unit B1 - 135m2	Unit B2 - 135m2		
Unit C1 - 130m2	Unit C2 - 130m2		
Unit D1 - 130m2	Unit D2 - 130m2		
Unit E1 - 162m2	Unit E2 - 162m2		
Unit F1 - 155m2	Unit F2 - 185m2		
Unit F3 - 155m2			
Unit G1 - 135m2	Unit G2 - 135m2		
Unit H1 - 95m2	Unit H2 - 95m2		
Unit I1 - 75m2	Unit I2 - 75m2	Unit I3 - 90m2	Unit I4 - 95m2
Unit J1 - 75m2	Unit J2 - 75m2	Unit J3 - 90m2	Unit J4 - 100m2
Unit J5 - 100m2	Unit J6 - 90m2		
Unit J7 - 75m2	Unit J8 - 75m2	Unit J9 - 75m2	Unit J10 - 75m2
Unit J11 - 90m2	Unit J12 - 100m2		

Totals 38 units 23 one bed 14 two bed 1 three bed 23 cars + 10 visitor spaces

Site Area 8024 sq.m.



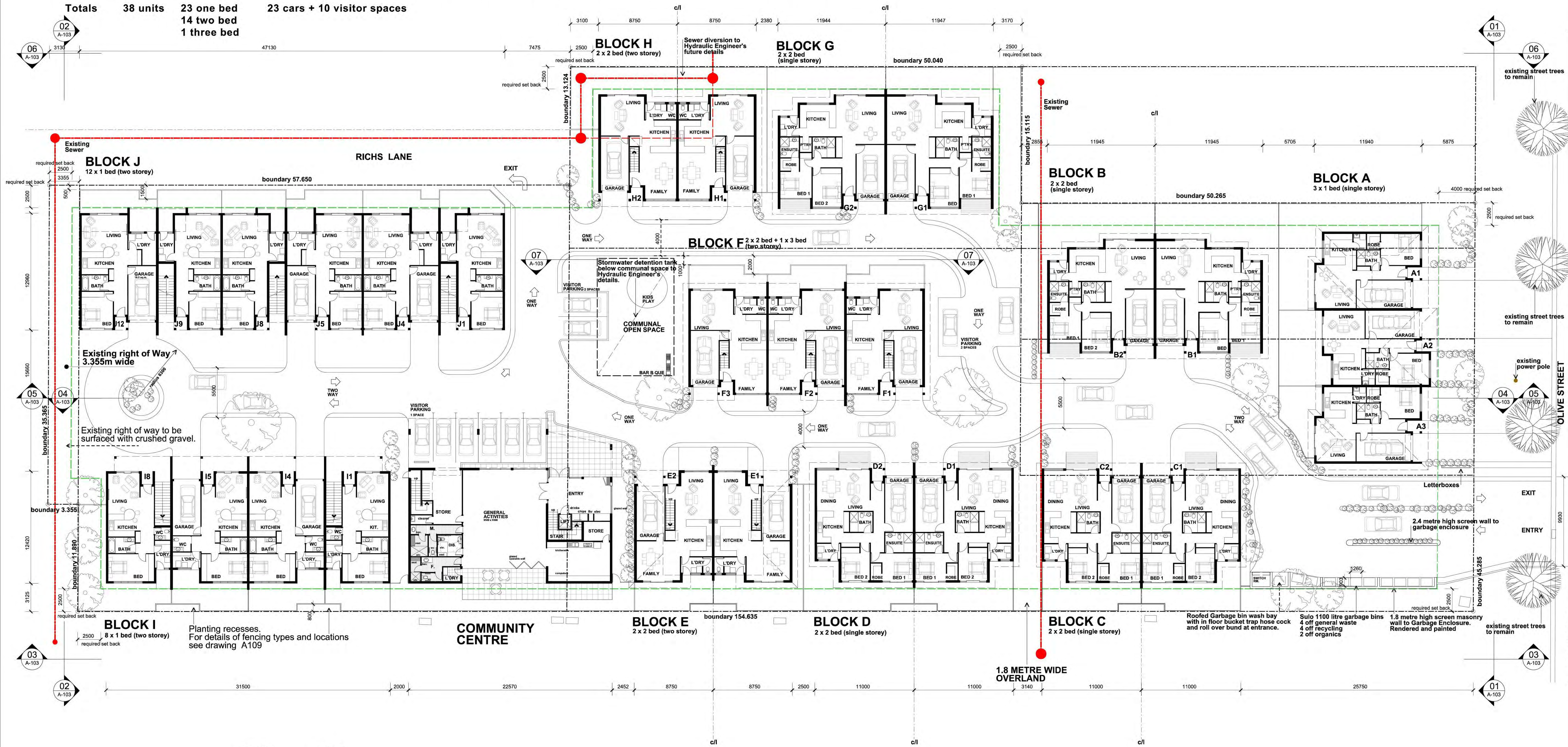
01	A-103	06	A-103
02	A-103	07	A-103
03	A-103	08	A-103
04	A-103	09	A-103
05	A-103	10	A-103
06	A-103	11	A-103
07	A-103	12	A-103
08	A-103	13	A-103
09	A-103	14	A-103
10	A-103	15	A-103
11	A-103	16	A-103
12	A-103	17	A-103
13	A-103	18	A-103
14	A-103	19	A-103
15	A-103	20	A-103
16	A-103	21	A-103
17	A-103	22	A-103
18	A-103	23	A-103
19	A-103	24	A-103
20	A-103	25	A-103
21	A-103	26	A-103
22	A-103	27	A-103
23	A-103	28	A-103
24	A-103	29	A-103
25	A-103	30	A-103
26	A-103	31	A-103
27	A-103	32	A-103
28	A-103	33	A-103
29	A-103	34	A-103
30	A-103	35	A-103
31	A-103	36	A-103
32	A-103	37	A-103
33	A-103	38	A-103
34	A-103	39	A-103
35	A-103	40	A-103
36	A-103	41	A-103
37	A-103	42	A-103
38	A-103	43	A-103
39	A-103	44	A-103
40	A-103	45	A-103
41	A-103	46	A-103
42	A-103	47	A-103
43	A-103	48	A-103
44	A-103	49	A-103
45	A-103	50	A-103
46	A-103	51	A-103
47	A-103	52	A-103
48	A-103	53	A-103
49	A-103	54	A-103
50	A-103	55	A-103
51	A-103	56	A-103
52	A-103	57	A-103
53	A-103	58	A-103
54	A-103	59	A-103
55	A-103	60	A-103
56	A-103	61	A-103
57	A-103	62	A-103
58	A-103	63	A-103
59	A-103	64	A-103
60	A-103	65	A-103
61	A-103	66	A-103
62	A-103	67	A-103
63	A-103	68	A-103
64	A-103	69	A-103
65	A-103	70	A-103
66	A-103	71	A-103
67	A-103	72	A-103
68	A-103	73	A-103
69	A-103	74	A-103
70	A-103	75	A-103
71	A-103	76	A-103
72	A-103	77	A-103
73	A-103	78	A-103
74	A-103	79	A-103
75	A-103	80	A-103
76	A-103	81	A-103
77	A-103	82	A-103
78	A-103	83	A-103
79	A-103	84	A-103
80	A-103	85	A-103
81	A-103	86	A-103
82	A-103	87	A-103
83	A-103	88	A-103
84	A-103	89	A-103
85	A-103	90	A-103
86	A-103	91	A-103
87	A-103	92	A-103
88	A-103	93	A-103
89	A-103	94	A-103
90	A-103	95	A-103
91	A-103	96	A-103
92	A-103	97	A-103
93	A-103	98	A-103
94	A-103	99	A-103
95	A-103	100	A-103
96	A-103	101	A-103
97	A-103	102	A-103
98	A-103	103	A-103
99	A-103	104	A-103
100	A-103	105	A-103
101	A-103	106	A-103
102	A-103	107	A-103
103	A-103	108	A-103
104	A-103	109	A-103
105	A-103	110	A-103
106	A-103	111	A-103
107	A-103	112	A-103
108	A-103	113	A-103
109	A-103	114	A-103
110	A-103	115	A-103
111	A-103	116	A-103
112	A-103	117	A-103
113	A-103	118	A-103
114	A-103	119	A-103
115	A-103	120	A-103
116	A-103	121	A-103
117	A-103	122	A-103
118	A-103	123	A-103
119	A-103	124	A-103
120	A-103	125	A-103
121	A-103	126	A-103
122	A-103	127	A-103
123	A-103	128	A-103
124	A-103	129	A-103
125	A-103	130	A-103
126	A-103	131	A-103
127	A-103	132	A-103
128	A-103	133	A-103
129	A-103	134	A-103
130	A-103	135	A-103
131	A-103	136	A-103
132	A-103	137	A-103
133	A-103	138	A-103
134	A-103	139	A-103
135	A-103	140	A-103
136	A-103	141	A-103
137	A-103	142	A-103
138	A-103	143	A-103
139	A-103	144	A-103
140	A-103	145	A-103
141	A-103	146	A-103
142	A-103	147	A-103
143	A-103	148	A-103
144	A-103	149	A-103
145	A-103	150	A-103
146	A-103	151	A-103
147	A-103	152	A-103
148	A-103	153	A-103
149	A-103	154	A-103
150	A-103	155	A-103
151	A-103	156	A-103
152	A-103	157	A-103
153	A-103	158	A-103
154	A-103	159	A-103
155	A-103	160	A-103
156	A-103	161	A-103
157	A-103	162	A-103
158	A-103	163	A-103
159	A-103	164	A-103
160	A-103	165	A-103
161	A-103	166	A-103
162	A-103	167	A-103
163	A-103	168	A-103
164	A-103	169	A-103
165	A-103	170	A-103
166	A-103	171	A-103
167	A-103	172	A-103
168	A-103	173	A-103
169	A-103	174	A-103
170	A-103	175	A-103
171	A-103	176	A-103
172	A-103	177	A-103
173	A-103	178	A-103
174	A-103	179	A-103
175	A-103	180	A-103
176	A-103	181	A-103
177	A-103	182	A-103
178	A-103	183	A-103
179	A-103	184	A-103
180	A-103	185	A-103
181	A-103	186	A-103
182	A-103	187	A-103
183	A-103	188	A-103
184	A-103	189	A-103
185	A-103	190	A-103
186	A-103	191	A-103
187	A-103	192	A-103
188	A-103	193	A-103
189	A-103	194	A-103
190	A-103	195	A-103
191	A-103	196	A-103
192	A-103	197	A-103
193	A-103	198	A-103
194	A-103	199	A-103
195	A-103	200	A-103
196	A-103	201	A-103
197	A-103	202	A-103
198	A-103	203	A-103
199	A-103	204	A-103
200	A-103	205	A-103
201	A-103	206	A-103
202	A-103	207	A-103
203	A-103	208	A-103
204	A-103	209	A-103
205	A-103	210	A-103
206	A-103	211	A-103
207	A-103	212	A-103
208	A-103	213	A-103
209	A-103	214	A-103
210	A-103	215	A-103
211	A-103	216	A-103
212	A-103	217	A-103
213	A-103	218	A-103
214	A-103	219	A-103
215	A-103	220	A-103
216	A-103	221	A-103
217	A-103	222	A-103
218	A-103	223	A-103
219	A-103	224	A-103
220	A-103	225	A-103
221	A-103	226	A-103
222	A-103	227	A-103
223	A-103	228	A-103
224	A-103	229	A-103
225	A-103	230	A-103
226	A-103	231	A-103
227	A-103	232	A-103
228	A-103	233	A-103
229	A-103	234	A-103
230	A-103	235	A-103
231	A-103	236	A-103
232	A-103	237	A-103
233	A-103	238	A-103
234	A-103	239	A-103
235	A-103	240	A-103
236	A-103	241	A-103
237	A-103	242	A-103
238	A-103	243	A-103
239	A-103	244	A-103
240	A-103	245	A-103
241	A-103	246	A-103
242	A-103	247	A-103
243	A-103	248	A-103
244	A-103	249	A-103
245	A-103	250	A-103
246	A-103	251	A-103
247	A-103	252	A-103
248	A-103	253	A-103
249	A-103	254	A-103
250	A-103	255	A-103
251	A-103	256	A-103
252	A-103	257	A-103
253	A-103	258	A-103
254	A-103	259	A-103
255	A-103	260	A-103
256	A-103	261	A-103
257	A-103	262	A-103
258	A-103	263	A-103
259	A-103	264	A-103
260	A-103	265	A-103
261	A-103	266	A-103
262	A-103	267	A-103
263	A-103	268	A-103
264	A-103	269	A-103
265	A-103	270	A-103
266	A-103	271	A-103
267	A-103	272	A-103
268	A-103	273	A-103
269	A-103	274	A-103
270	A-103	275	A-103
271	A-103	276	A-103
272	A-103	277	A-103
273	A-103	278	A-103
274	A-103	279	A-103
275	A-103	280	A-103
276	A-103	281	A-103
277	A-103	282	A-103
278	A-103	283	A-103
279	A-103	284	A-103
280	A-103	285	A-103
281	A-103	286	A-103
282	A-103	287	A-103
283	A-103	288	A-103
284	A-103	289	A-103
285	A-103	290	A-103
286	A-103	291	A-103
287	A-103	292	A-103
288	A-103	293	A-103
289	A-103	294	A-103
290	A-103	295	A-103
291	A-103	296	A-103
292	A-103	297	A-103
293	A-103	298	A-103
294	A-103	299	A-103
295	A-103	300	A



Summary of Accommodation

Building Block	Number of units in block	Make up of units	Number of cars accommodated in block	Gross Floor Area											
Block A	3	one bed units	3 cars	Unit A1 - 95m2	Unit A2 - 95m2	Unit A3 - 95m2									
Block B	2	two bed units	2 cars	Unit B1 - 135m2	Unit B2 - 135m2										
Block C	2	two bed units	2 cars	Unit C1 - 130m2	Unit C2 - 130m2										
Block D	2	two bed units	2 cars	Unit D1 - 130m2	Unit D2 - 130m2										
Block E	2	two bed units	2 cars	Unit E1 - 162m2	Unit E2 - 162m2										
Block F	2	two bed units	2 cars	Unit F1 - 155m2	Unit F2 - 185m2										
	1	three bed unit	1 cars	Unit F3 - 155m2											
Block G	2	two bed units	2 cars	Unit G1 - 135m2	Unit G2 - 135m2										
Block H	2	two bed units	2 cars	Unit H1 - 95m2	Unit H2 - 95m2										
Block I	8	one bed units	2 cars	Unit I1 - 75m2	Unit I2 - 75m2	Unit I3 - 90m2	Unit I4 - 95m2	Unit I5 - 95m2	Unit I6 - 90m2	Unit I7 - 75m2	Unit I8 - 75m2				
Block J	12	one bed units	3 cars	Unit J1 - 75m2	Unit J2 - 75m2	Unit J3 - 90m2	Unit J4 - 100m2	Unit J5 - 100m2	Unit J6 - 90m2						
				Unit J7 - 75m2	Unit J8 - 75m2	Unit J9 - 75m2	Unit J10 - 75m2	Unit J11 - 90m2	Unit J12 - 100m2						

Totals 38 units 23 one bed 14 two bed 1 three bed 23 cars + 10 visitor spaces

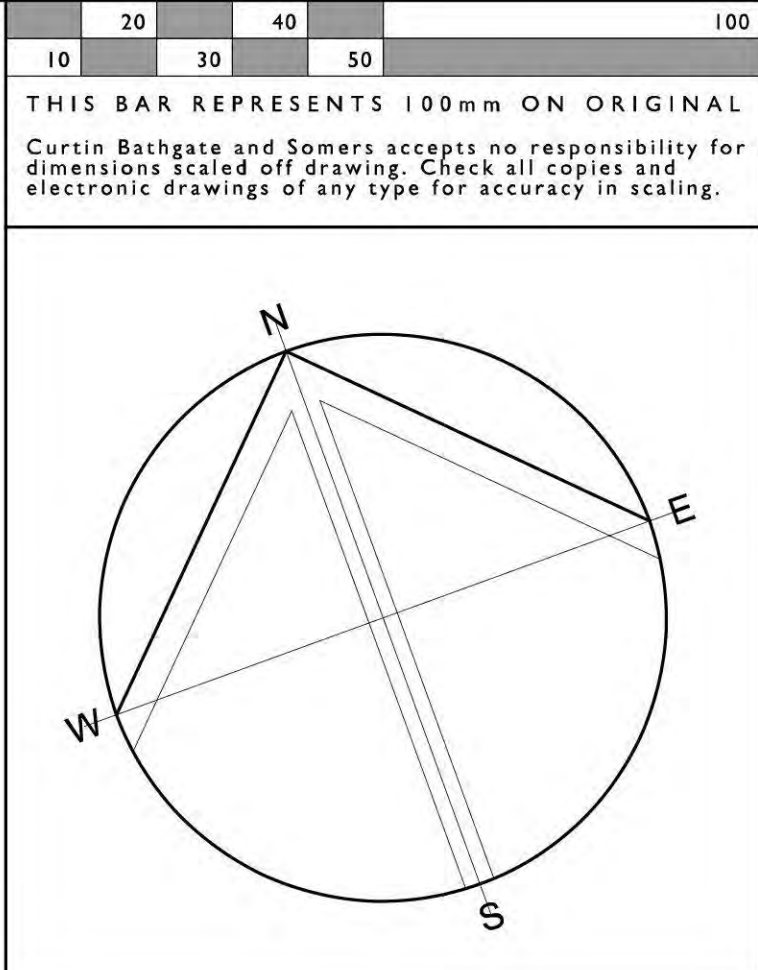


KIEWA ST. OLIVE ST.



LOCATION PLAN NTS

Site Area 8024 sq.m.



THIS BAR REPRESENTS 100mm ON ORIGINAL		
Curtin Architects and Somers accept no responsibility for dimensions scaled off drawing. Check all copies and electronic drawings of any type for accuracy in scaling.		
B Revision to western boundary turning circle, right of way surfacing, Garbage area and deletion of entry arrow at Richs Lane.		
A Issued for Development Application		
Issue	Amendment Description	Date
AMENDMENTS		
1. Figured dimensions to be taken in preference to scaling.		
2. Builder to check all dimensions on site where relevant and notify of any discrepancies.		
3. All dimensions are given in millimetres except levels and drawings to scale 1:500 and smaller which are in metres.		

CLIENT

St Vincent de Paul Society  
good works

Amelia Housing  
Building New People's Housing

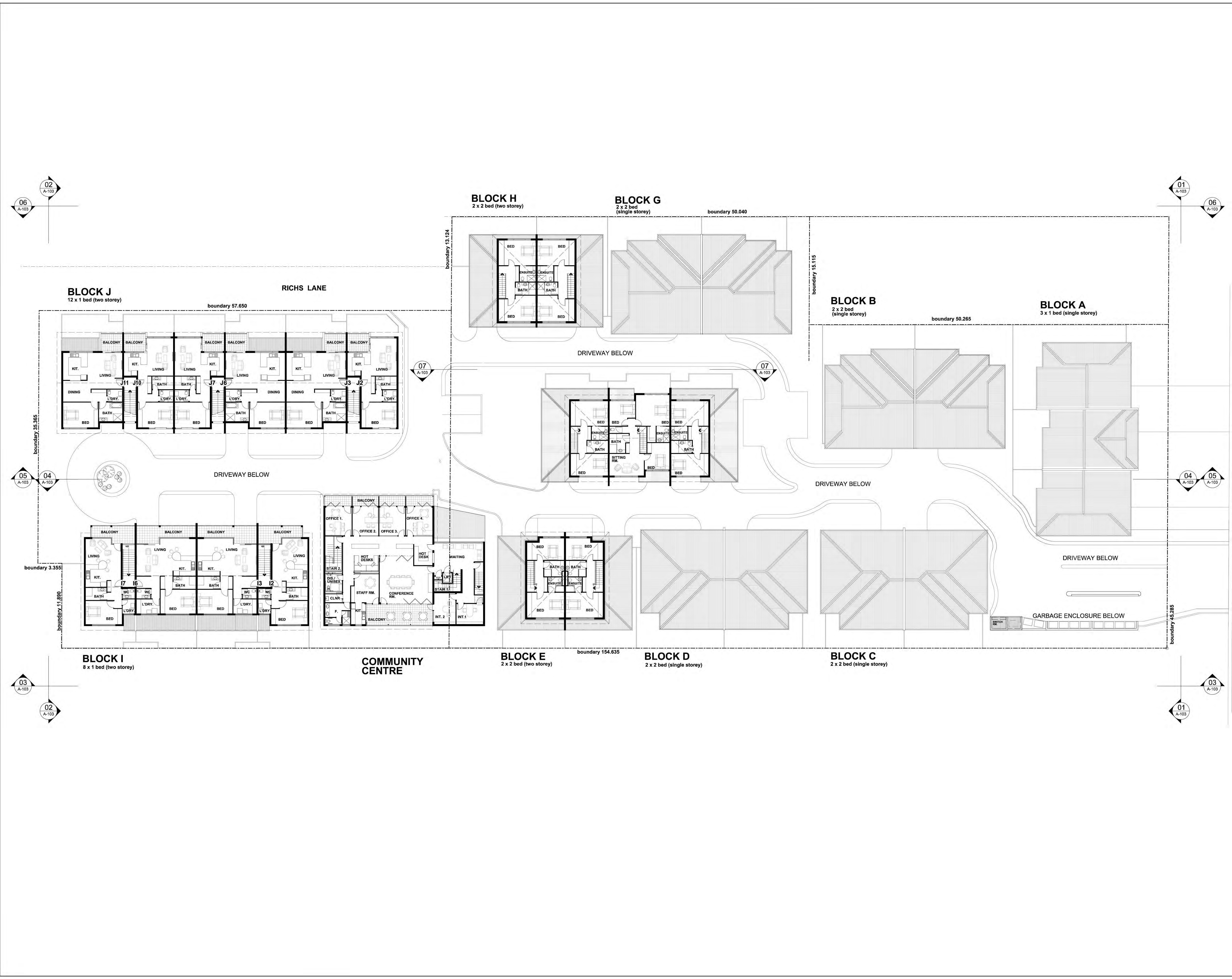
CURTIN ARCHITECTS  
PTY. LIMITED ABN 43 052 103 744  
Level 2, 52 Arclison Street ST LEONARDS NSW 2065  
mail@curtinarchitects.com.au Phone: (02) 9437 1111

PROJECT:  
**AFFORDABLE HOUSING  
DEVELOPMENT  
OLIVE STREET ALBURY**

DRAWING TITLE:  
**SITE PLAN  
(Ground Floor)**

DRAWN BY: GT	SCALE: 1:200 @ B1
PROJECT No: 6477	DATE STARTED:
	DRAWING No: A100
	ISSUE: B





10204050100

THIS BAR REPRESENTS 100mm ON ORIGINAL

Curtin Bathgate and Somers accepts no responsibility for dimensions scaled off drawing. Check all copies and electronic drawings of any type for accuracy in scaling.

N

E

S

W

AMENDMENTS

B	Amendments to driveway for Service Vehicle movement	Apr. 2017
A	Issued for Development Application	Jan. 2017
Issue	Amendment Description	Date

1. Figured dimensions to be taken in preference to scaling.

2. Builder to check all dimensions on site where relevant and notify of any discrepancies.

3. All dimensions are given in millimetres except levels and drawings to scale 1:500 and smaller which are in metres.

CLIENT

St Vincent de Paul Society

good works

Armelle Housing

Building New People's Housing

CURTIN ARCHITECTS

PTY. LIMITED

ABN 43 052 103 744

Level 2, 52 Atchison Street ST LEONARDS NSW 2065

mail@curtinarchitects.com.au Phone: (02) 9437 1111

CURTIN ARCHITECTS

PROJECT:

AFFORDABLE HOUSING DEVELOPMENT OLIVE STREET ALBURY

DRAWING TITLE:

SITE PLAN (First Floor Level)

DRAWN BY:

GT

SCALE:

1:200 @ B1

PROJECT No:

6477

DATE STARTED:

DRAWING No:

A101

ISSUE:

B

FILE NAME:

T:\6477 St Vincent de Paul Albury\CAD\Drawings\Fls\A101 Site Plan Upper Level.dgn

PLOT DATE:

12/04/2017

PLOT TIME:

2:56:29 PM